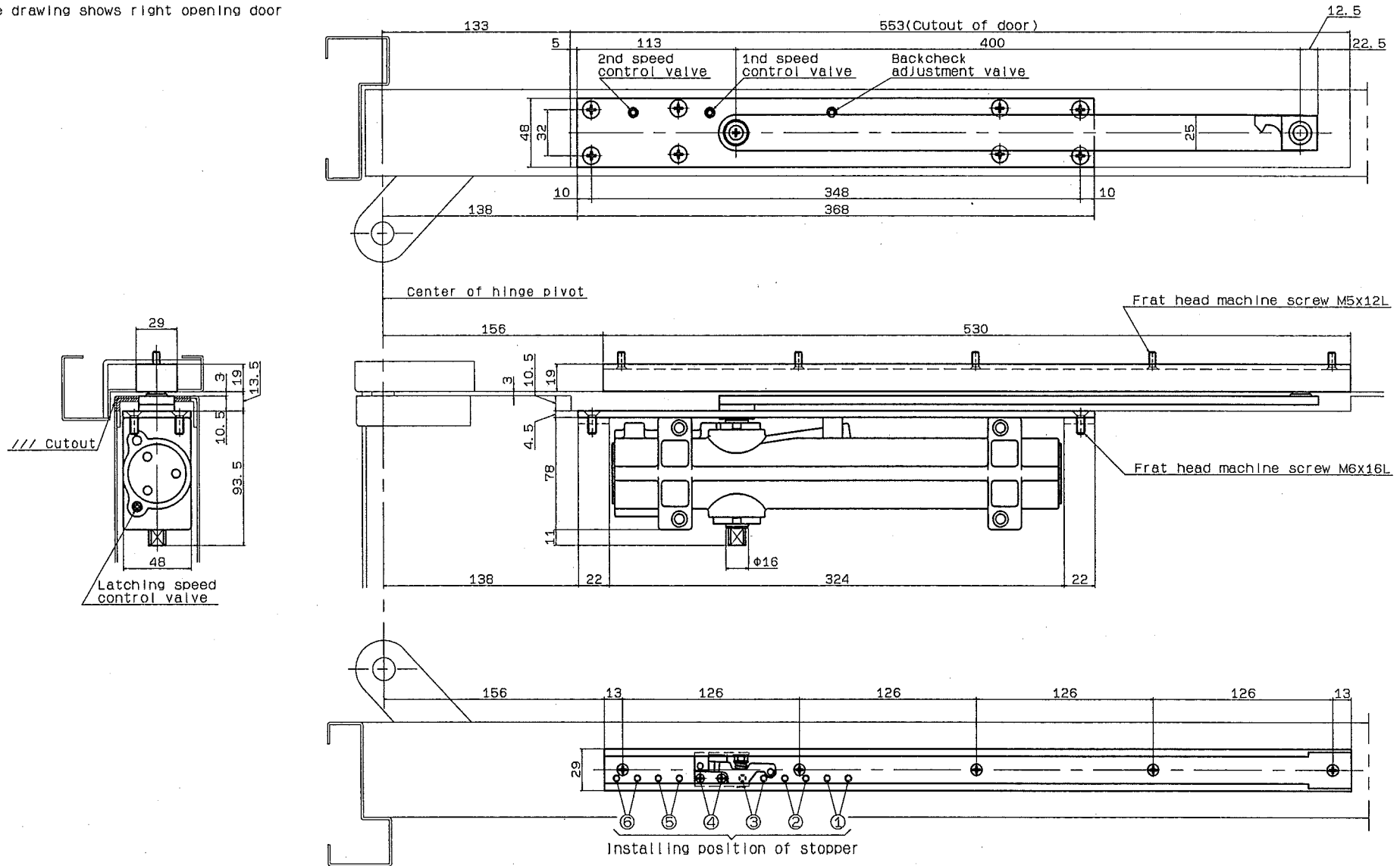


Mode No.		Max door dimensions (mm)	Max door weight	Applicable door thickness (mm)		Hold-open device, stopper device installation position	①	②	③	④	⑤	⑥
Without hold-open	With hold-open			Steel door	Wooden door							
CO-55	CO-155	1200X2400	120kg	60	65	Maximum opening angle	78°	82°	87°	92°	97°	103°
CO-56	CO-156	1800X2700	180kg	or more	or more							

①	②	③	④	⑤	⑥
78°	82°	87°	92°	97°	103°

● The drawing shows right opening door



RYOBI LIMITED	PRODUCTS	APPLICATION	MODEL No.	DATE	REV.
	CONCEALED TYPE	Offset hung(105' opening) · Standard installation	CO-55, CO-56, CO-155, CO-156	07/30/2018	