

EASY ACCESS SYSTEM BASED ON RADIO FREQUENCY

1 Available from this range (sold separately)

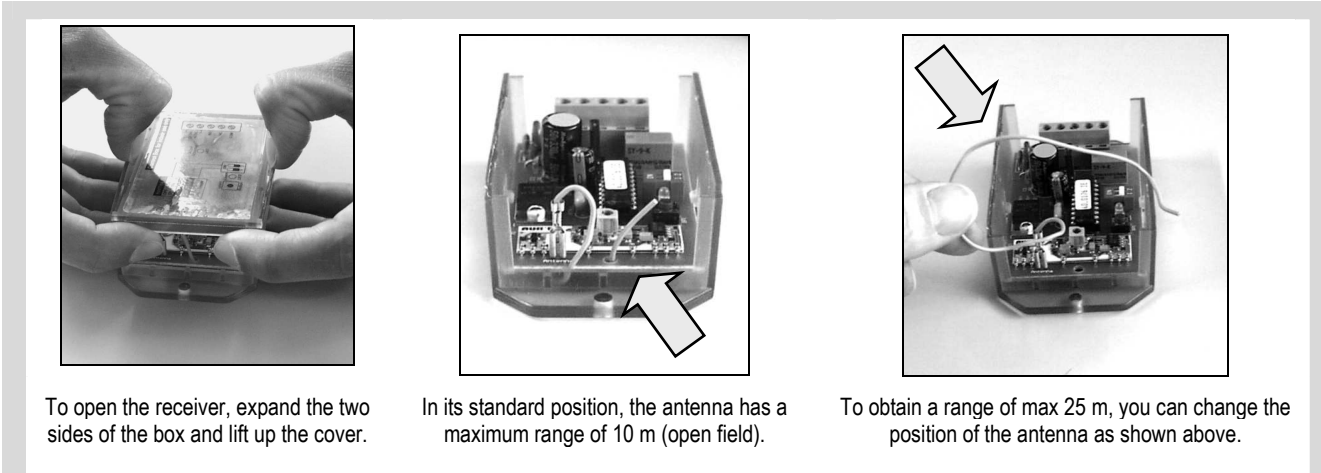


EAS RF RECEIVER

EAS RF KEY FOBS

EAS RF TRANSMITTER FOR PUSH PLATES

2 General information



To open the receiver, expand the two sides of the box and lift up the cover.

In its standard position, the antenna has a maximum range of 10 m (open field).

To obtain a range of max 25 m, you can change the position of the antenna as shown above.

LED Receiver		The record LED flashes when the system receives information coming from any key fob/transmitter (recorded or not). During a 'record' sequence, the LED switches on until the system receives the data coming from the new key fob/transmitter.
		The output LED switches on when the output is activated.
LED Key Fob/Transmitter		The check LED switches on when the key fob/transmitter sends data to the EAS receiver.

Dip Switch Settings		1	2
	ON	Output Toggle mode	Hold time 10s
	OFF	Output Impulse mode	Hold time 0.5s

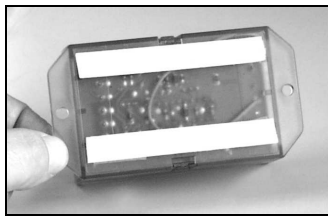
Toggle mode
When you press the button of the key fob/transmitter, the output is activated until you press the same button again.

Impulse mode
When you press the button of the key fob/transmitter, the output is activated during 0.5 or 10 s (depending on dip switch 2).

- Add one Key Fob/ Transmitter**
1. Press the **record button** on the EAS receiver **once**. The yellow LED will switch on.
 2. Press the **button** of the new EAS **key fob/ transmitter twice**.
When the LED stops flashing the key fob/transmitter is recorded in the system.
-
- Remove all Key Fobs/ Transmitters**
1. Press the **record button** on the EAS receiver **until the yellow LED switches off** (about 8 s).
 2. The memory of the receiver is cleared now and you can re-activate your EAS key fob(s)/transmitter(s) by using the above mentioned procedure.

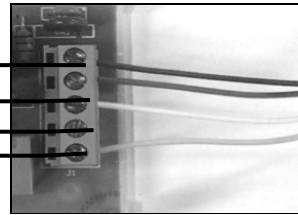
3 Installation

1 Mounting and wiring the receiver



Fix the receiver in the door operator using the double sided tape.

12V-24V AC/DC
NO
NC
COM

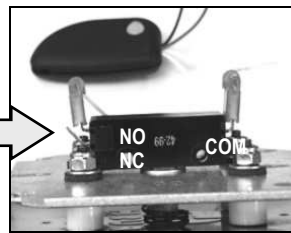
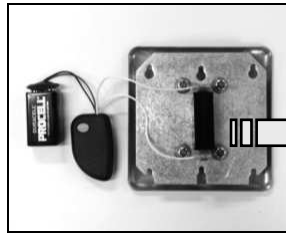


BROWN/GREEN
WHITE
YELLOW

Connect the receiver to the door operator as shown.

Note: You can choose between NO (normally open) or NC (normally closed)

2 Mounting and wiring the transmitter for push plates



Connect the transmitter to the battery and to the push plate.

Note: You can choose between NO (normally open) or NC (normally closed)

To fix the transmitter and the battery in the push plate mounting box, you can use the round VELCRO stickers.

4 Troubleshooting

SYMPTOMS	POSSIBLE CAUSES	CORRECTIVE ACTION
The door does not react to the EAS key fob/ transmitter and the yellow LED is OFF.	The key fob/transmitter battery is down. The EAS receiver power is off.	Check the key fob/transmitter LED and change the battery if necessary. Check the position of the antenna. Check the supply. Check the supply voltage.
The door does not react to the EAS key fob/ transmitter and the yellow LED is flashing.	The key fob/transmitter is not recognized by the EAS receiver.	Push the button on the key fob/transmitter twice. Execute the recording procedure described under point 2 with that key fob/transmitter.
The door does not react to the EAS key fob/ transmitter and the red LED is switched on.	The EAS receiver is not correctly wired.	Check the connection to the door operator.
It is impossible to add or remove a key fob/transmitter.	The maximum number of recordable key fobs/transmitters in the system is reached.	Try to reduce the number of key fobs/transmitters. Connect a second EAS receiver.
	The key fob/transmitter battery is down.	Check the key fob/transmitter LED and change the battery if necessary.

5 Technical specifications

Technology	: radio frequency
Transmitter frequency	: 433.92 MHz
Max. detection distance	: 25m (open field)
Supply voltage	: 12V to 24V AC \pm 15%; 12V to 30V DC \pm 10%
Standard output	: relay; COM, NO, NC; 42 V AC/DC; 1A; 30 W (DC) / 60 VA (AC)
Holdtime	: 0.5s or 10s
Dimensions of receiver	: 94mm (W) x 52mm (H) x 28mm (D)
Temperature range	: -20°C to + 55°C (indoor use only!)
Length of cable	: 2.5 m
Max. number of key fobs/transmitters	: 10
Power consumption	Receiver: standby 10 mA, active 50 mA Key Fob SB/Transmitter: standby 1 μ A, active 10 mA Key Fob LB: standby 1 μ A, active 14 mA
LED-indicator	Receiver: 1 yellow LED: record; 1 red LED: output Key Fob/Transmitter: 1 red LED: emission
Battery	Key Fob: 12V alkaline type A23 – 33 mAh; Transmitter: 9 V alkaline – 500 mAh

42.0104 / V3 – 01.07



The declaration of conformity and other technical documentation are available on our website or can be requested by phone or mail.