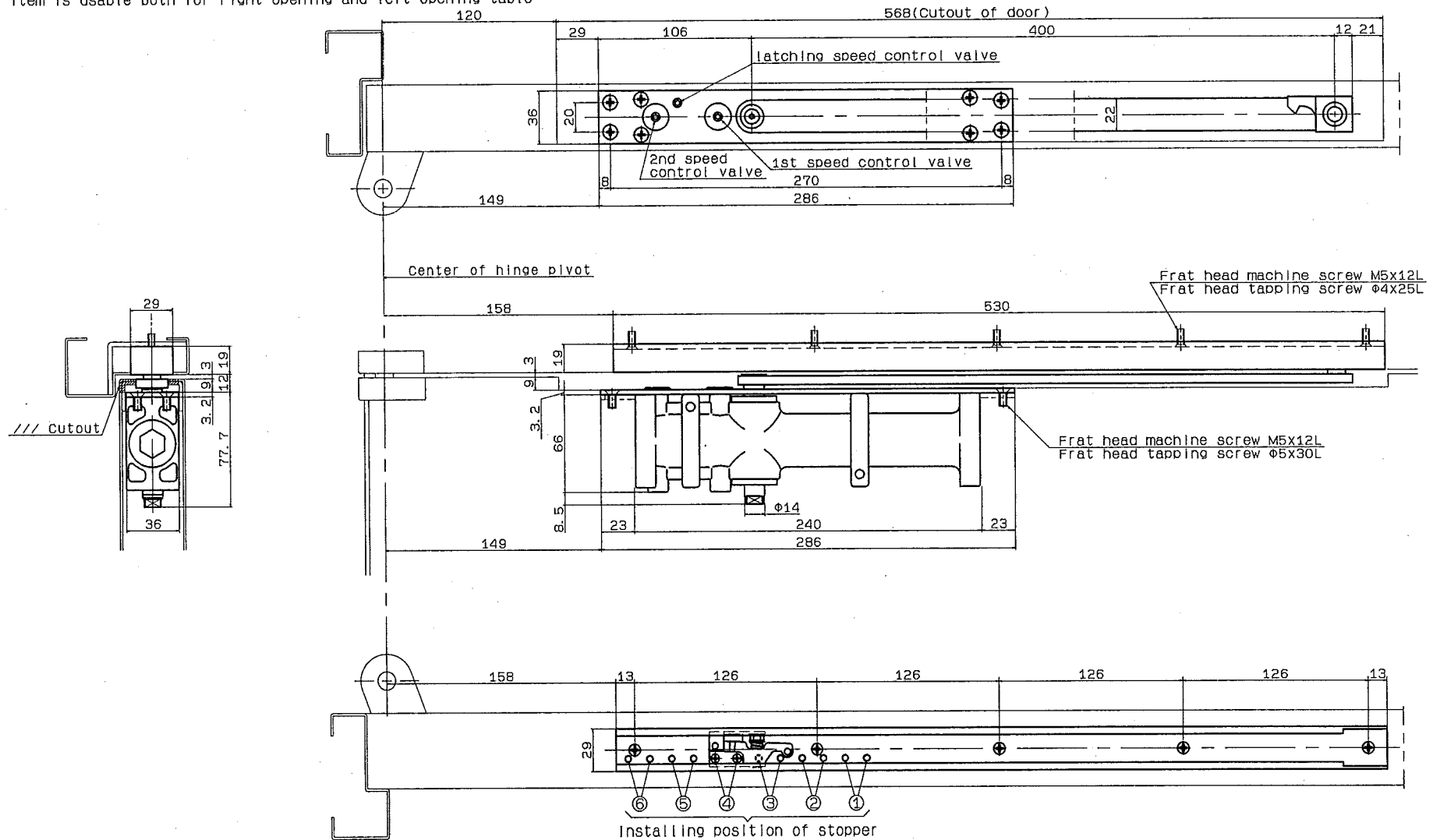


Model No.			Max door dimensions (mm)	Max door weight	Applicable door thickness (mm)		Hold-open device, stopper device installation position	①	②	③	④	⑤	⑥
without hold-open	with hold-open	With Backcheck			Steel door	Wooden door							
CO-53	CO-153	CO-53BC	950X2100	65kg	45	50	Maximum opening angle	76°	81°	87°	92°	98°	105°
CO-54	CO-154	CO-54BC	1050X2400	85kg	or more	or more							

- The drawing shows right opening door
- This item is usable both for right opening and left opening table



RYOBI LIMITED	PRODUCTS	APPLICATION	MODEL No.	DATE	REV.
	CONCEALED TYPE	Offset hung(105' opening) · Standard installation	CO-53, CO-54, CO-153, CO-154	07/30/2018	