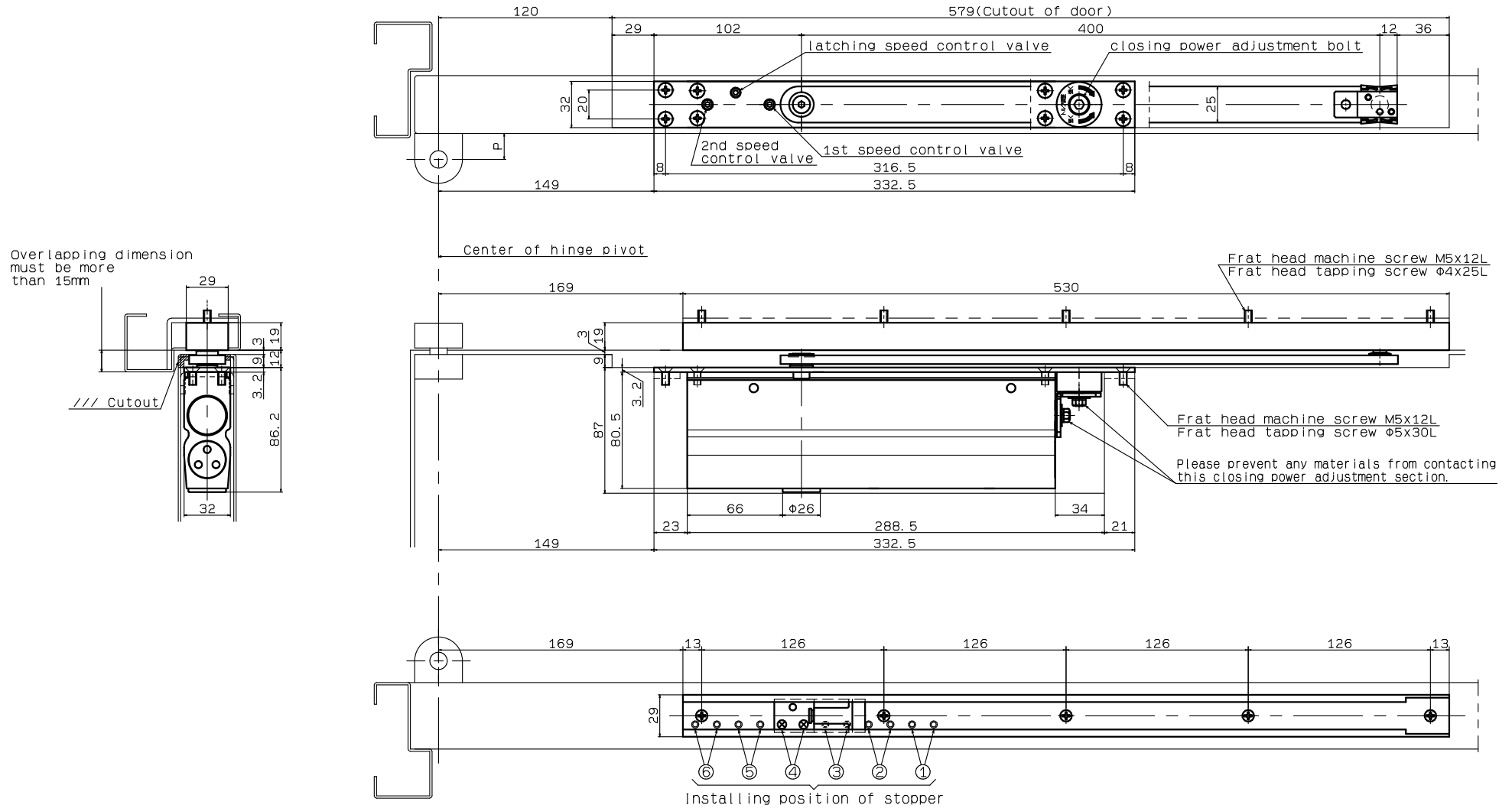


Model No.				Applicable door size		Applicable door thickness(mm)		Type						
without hold-open		with hold-open		Width(mm)	Weight(kg)	Steel door	Wooden door	*P dimension (offset dimension)	Hold-open device stopper device installation position					
Right hand	Left hand	Right hand	Left hand						①	②	③	④	⑤	⑥
GC-4V-R	GC-4V-L	GCS-4V-R	GCS-4V-L	800 to 1050	15 to 100	40 or more	45 or more	18	75°	80°	86°	91°	98°	105°
								25	75°	81°	86°	92°	98°	105°
								20	75°	81°	86°	91°	98°	105°

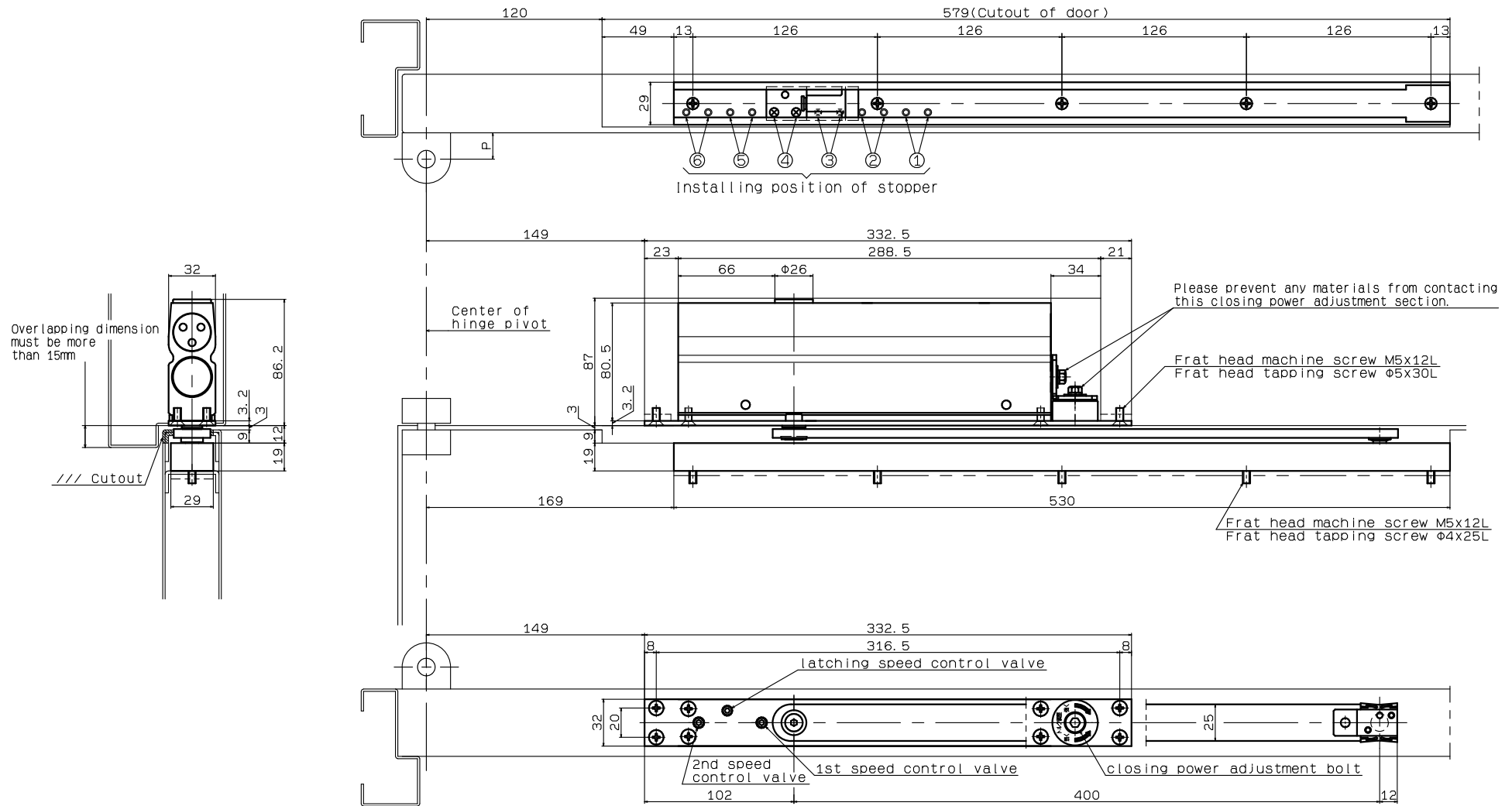
● Make sure to install a door stopper in case of using this model.



RYOBI LIMITED	PRODUCTS	APPLICATION	MODEL No.	DATE	REV.
	CONCEALED TYPE	Offset hung(105° opening)·Standard installation	GC-4V, GCS-4V	11/22/2021	1

Model No.				Applicable door size		Applicable door thickness(mm)		Type						
without hold-open		with hold-open		Width(mm)	Weight(kg)	Steel door	Wooden door	*P dimension (offset dimension)	Hold-open device		stopper device installation position			
Right hand	Left hand	Right hand	Left hand						①	②	③	④	⑤	⑥
GC-4V-R	GC-4V-L	GCS-4V-R	GCS-4V-L	800 to 1050	15 to 100	40 or more	40 or more	18	68"	74"	81"	88"	96"	105"
								25	68"	74"	80"	87"	95"	104"
								20	68"	74"	81"	88"	96"	105"

● Make sure to install a door stopper in case of using this model.



RYOBI LIMITED	PRODUCTS	APPLICATION	MODEL NO.	DATE	REV.
	CONCEALED TYPE	Offset hung(105° opening)·Top Jamb installation	GC-4V, GCS-4V	11/22/2021	1