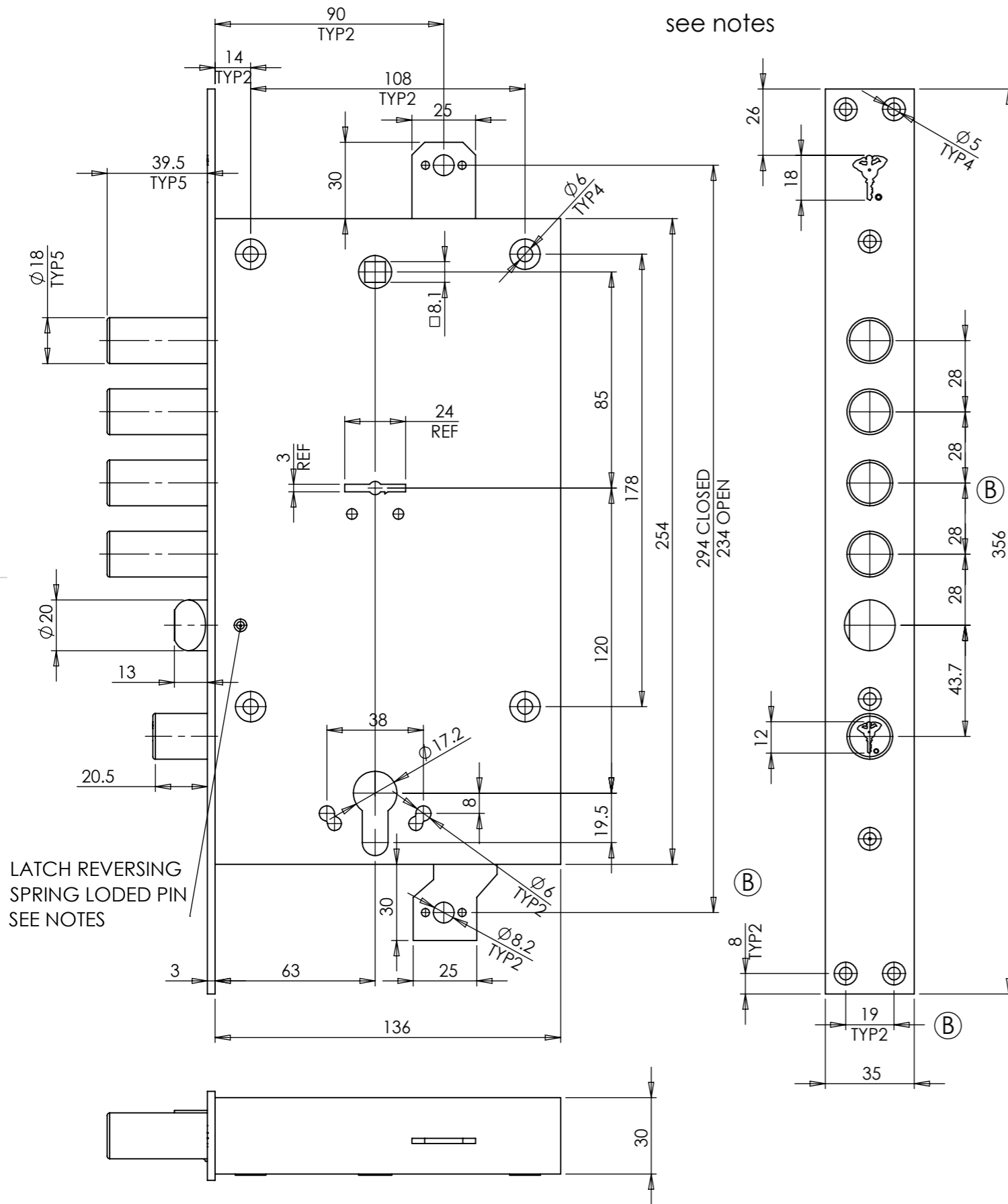
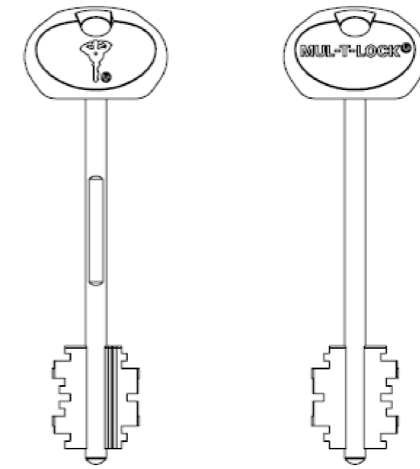


REV.	DESIGNED BY	APPROVED BY	DATE	REMARKS
B	BELO	DANI	27/04/2021	FRONT PLATE LEGTH WAS CHANGED TO 365mm



KEY WITH MTL LOGO



LOCK DESCRIPTION:

Double activated lock

-Upper lever lock with five double bit plastic head key with MTL logo.

-Lower lock -Euro cylinder activated (cylinder not included).

FUNCTION:

-when the lever lock is fully locked, the latch cannot be operated with handle or cylinder.

-when the cylinder lock is locked, the lever lock cannot be operated (open or close).

-latch: reversible by pressing the pin (see drawing), and rotating the latch 180 deg.

LOCK FINISH:

-Front plate: stainless steel

-Lock box: galvanized steel.

-Bolts and Latch: Chrome nickel plated.

-Lever keys with plastic head with MTL logo. Plastic color : GREY, RAL7046

-MTL Logo: according to MTL dxf file.

FRONT PLATE BY STAMPING

BOLT BY LASER

LOCK SHOULD BE PROPERLY LUBRICATED

PROJECTION 	SURFACE ROUGHNESS:	UNLESS OTHERWISE SPECIFIED: DIMENSIONS ARE IN MILLIMETERS TOLERANCES: LINEAR: ANGULAR:	PROJECT: MORTISE LOCKS
© THE INFORMATION CONTAINED IN THIS DRAWING IS THE SOLE PROPERTY OF MUL-T-LOCK LTD.		NAME	DATE
ANY REPRODUCTION IN PART OR AS A WHOLE WITHOUT THE WRITTEN PERMISSION OF MUL-T-LOCK LTD IS PROHIBITED.		DESIGN	BELO 21.03.21
		DRAWN	BELO 21.03.21
		CHK'D	BELO 21.03.21
		APPV'D	DANI M. 21.03.21
		MATERIAL:	SIZE: A3
		WEIGHT: gr	DWG NO. 92100497
			REV. B
			DO NOT SCALE DRAWING
			SHEET 1 OF 1
			SCALE: 1:5

PRINT DATE: 27 April 2021