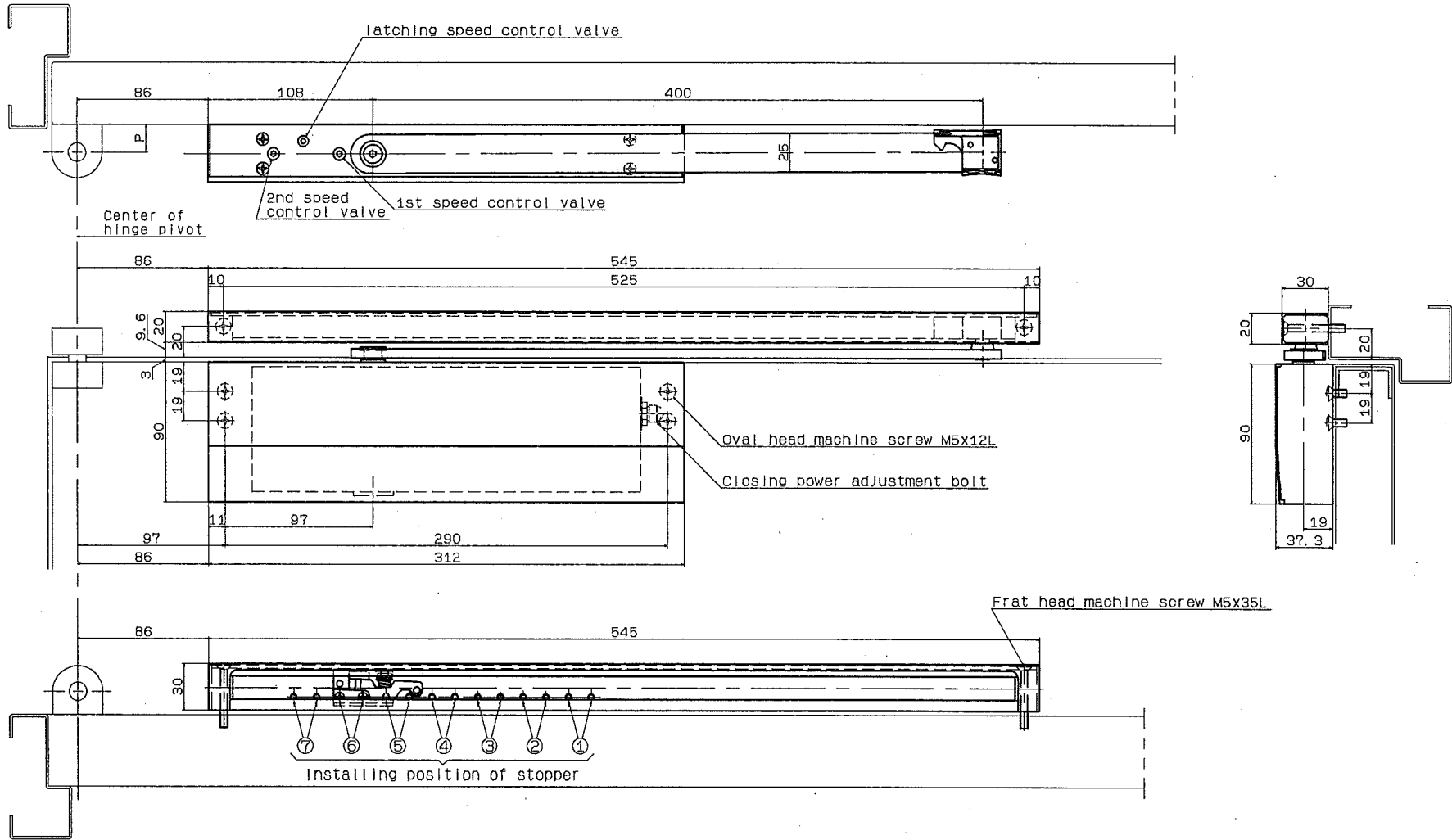


Model No.				Applicable door size		Type	P' dimension (offset dimension)	Hold-open device stopper device installation position						
Without hold-open		With hold-open		Width(mm)	Weight(kg)			①	②	③	④	⑤	⑥	⑦
Right hand	Left hand	Right hand	Left hand	800	15	Maximum opening angle	18	78'	86'	95'	105'	117'	132'	159'
GT-4V-R	GT-4V-L	GTS-4V-R	GTS-4V-L	to 1050	to 100		25	79'	87'	96'	106'	117'	132'	159'
							20	78'	86'	95'	105'	117'	132'	160'

● Make sure to install a door stopper in case of using this model.



RYOBI LIMITED	PRODUCTS	APPLICATION	MODEL No.	DATE	REV.
	TRACK-RAIL TYPE	Pull side installation	GT-4V, GTS-4V	07/30/2018	