

Microwave Motion Sensor HR50/HR50-Uni

CE 0678

Instruction Manual

The HR50 sensors are highly sensitive, high performance products that serve to control devices for the opening and closing of automatic doors by detecting the movement of humans or objects. For the safe and accurate use please read this instruction manual carefully.



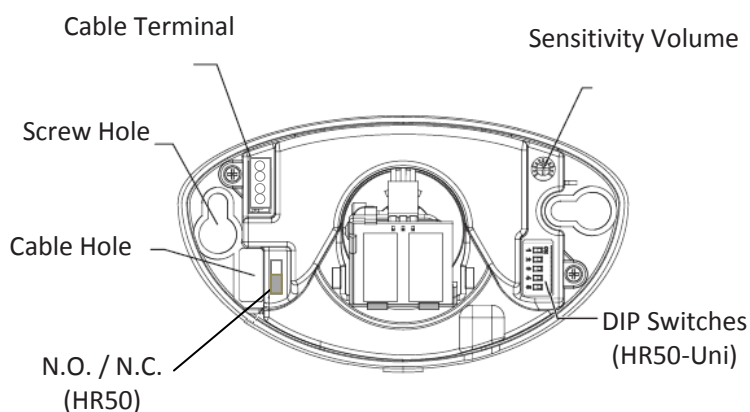
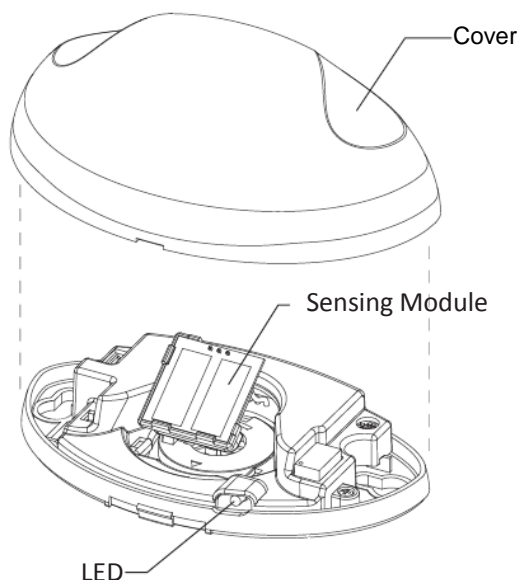
1. Technical specifications

| | |
|--------------------------|---|
| Power Supply: | DC 12~30V, AC 12~24V |
| Microwave module: | 24,125 GHz |
| Hold time: | 1,2s |
| Detecting field: | ~4000x3000 (WxD) (Height 2200mm) |
| Power consumption: | < 1,4W |
| Contact capacity: | 1A/24VDC |
| Max Install height: | 4000mm |
| Operating Temp./Humidity | -20°C - +60°C 0~90% (Non-Condensing) |
| IP: | 54 |
| LED: | Green = STANDBY Blue = DETECTION Green/Blue blinking = INTERNAL ERROR |



The specifications of this product can be changed without prior notice

2. General Information



< Accessories >



Mounting Template



Cable



Screws x 2

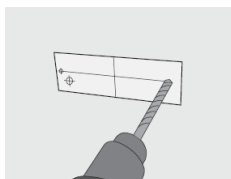


Instructions

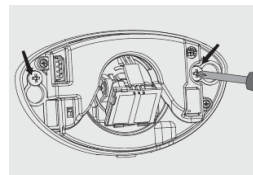
Microwave Motion Sensor HR50/HR50-Uni

3. Installation Guide

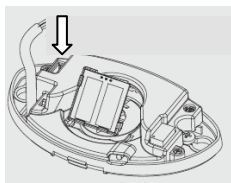
1. Apply mounting template to transom and make holes



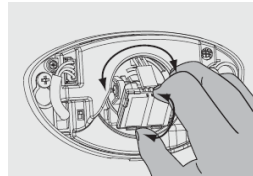
2. Fix the case to the wall



3. Connect power cable to sensor's terminal



4. Tilt angle up or down, left or right to change sensing field

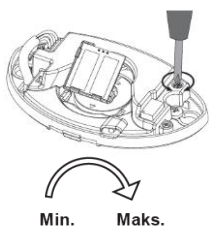


Caution

Do not supply the power during engineering work of installation!
Do not disassemble or modify the device, it may cause fire or electric shock!

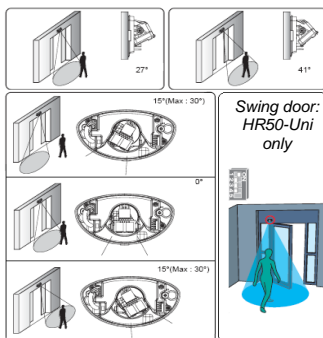
4. Sensitivity

Sensitivity is adjustable by setting volume on the main body

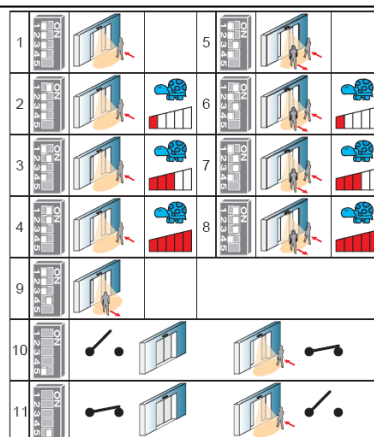


5. Sensing Field

Changing position of pattern



6. DIP Switches (HR50-Uni only)

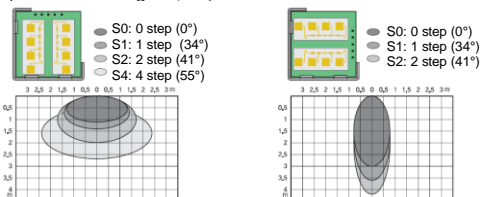


Turtle mode – slow speed detection

Relay hold time – 1 unit = 1s

7. Detection Field

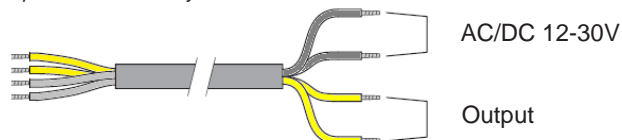
(Installation Height 2,2m)



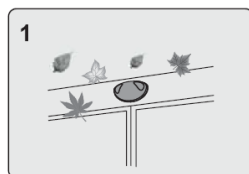
Sensitivity

8. Wiring diagram

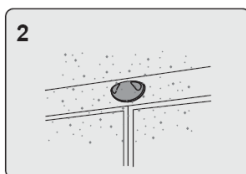
2 power lines & 2 relay contact lines



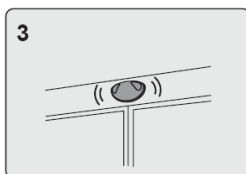
9. Mounting Information



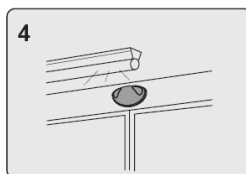
Avoid moving objects close to the sensor



Avoid heavy rain and snow

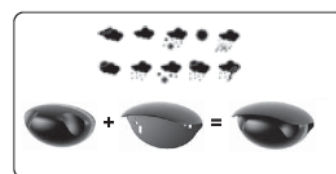


Avoid vibrations



Avoid fluorescent light sources

10. Weather Cover (sold separately)



Model WCHR50